

2014 AR-ONE  
TRAVEL TRAILERS BY STARCRAFT®

# AR-One

50 YEARS OF CAMPING | PURE AND SIMPLE



*The Gold Edition*



- ◆ 2-YEAR LIMITED WARRANTY
- ◆ TOWABLE BY MOST MINIVANS\*
- ◆ 48-GAL. FRESH WATER CAPACITY (SELECT MODELS)
- ◆ 7-YEAR TENT WARRANTY (SELECT MODELS)\*

\*CONSULT WITH YOUR AUTHORIZED AUTOMOBILE MANUFACTURER AND VEHICLE OWNER'S MANUAL

STARCRAFT





AR-ONE 25BHS

# AR-One

Simple Economy.

- 1 FRONT BLACK DIAMOND PLATE WITH SIDEWALL COLOR BAND (EXTREME PACKAGE)
- 2 SLEEPS UP TO 8 COMFORTABLY WITH CONVENIENT BUNK BEDS (SELECT MODELS)
- 3 FRONT AND REAR STABILIZER JACKS (50TH ANNIVERSARY PACKAGE)
- 4 3 CU. FT. GAS/ELECTRIC REFRIGERATOR/FREEZER (6 CU. FT. IN WIDEBODY)
- 5 HASSLE-FREE ELECTRIC PATIO AWNING WITH ADJUSTABLE PITCH



# Standards and Options

## STANDARD CONSTRUCTION FEATURES

- 5/8" tongue-and-groove plywood main floor decking (WideBody)
- Fully decked roof with 3/8" decking
- One-piece, seamless rubber roof material
- Poly Flex one-piece underbelly covering
- R-7 fiberglass insulation in sidewalls, roof and floor
- Roof rafters constructed of residential-style tapered trusses
- Screwed-stile cabinetry with hardwood stiles

## STANDARD EXTERIOR EQUIPMENT

- 20-lb. propane bottle
- 20-lb. propane bottles (2) (WideBody)
- 48-gal. fresh water capacity (WideBody)
- 120V G.F.C.I. protected exterior receptacle
- 5,000-BTU A/C (14RB, 15RB and 16BH)
- 8,000-BTU A/C (17RD and 18FB)
- 13,500-BTU A/C (WideBody)
- AquaShield Aqualon water-repellent sectionalized tent with 7-year warranty (15RB and 18FB)
- Bumper with drain hose carrier and end caps
- Bunk-end tent permanently attached to bed base (15RB and 18FB)
- Cable TV prepped
- Dark tinted, safety-glass windows
- Electric brakes
- Front window with flush-mounted stone guard (select models)
- Galvanized-steel wheel wells
- Large pass-thru storage (WideBody)
- Radial tires
- Rain guttering, molded with drip spouts
- Roof-mounted antenna for radio
- Spare tire with carrier (n/a on WideBody)
- Three-toned exterior metal
- Water system winterization kit

## STANDARD INTERIOR EQUIPMENT

- 2-burner range
- 3-burner range (WideBody)
- 3 cu. ft. gas/electric refrigerator
- 6 cu. ft. flush-mount refrigerator (WideBody)
- 54" booth dinette (n/a WideBody)
- 81" interior height (WideBody)
- Acrylic sink with faucet
- Bourbon Glaze beech wood cabinetry
- Double-over-double bunk bed with 600-lb. bunk capacities (26BH WideBody)
- Evergreen mattress with upgraded radius corners (WideBody)
- Extra large picture window at dinette
- Hardwood cabinet doors
- High-rise kitchen faucet (WideBody)
- LED light in bunk (15RB and 18FB)
- Medicine cabinet (WideBody)
- Quilted bunk mats
- Quilted bedspread (WideBody)
- Shaw Carpet with R2X stain and soil resistance (slideout models)
- Skylight in tub/shower (n/a WideBody)
- Systems monitor panel

## CUSTOMER CONVENIENCE PACKAGE

- 6-gal. gas DSI water heater
- Front diamond plate
- Microwave oven with carousel
- Patio awning
- Pleated shades
- Range hood with light and exhaust fan
- Rear stabilizer jacks
- Stereo with AM/FM and iPod/MP3 connection
- Water heater bypass system

## 50TH ANNIVERSARY PACKAGE (MANDATORY)

- 50th Anniversary spare tire cover (n/a on WideBody)
- Electric awning
- Front and rear stabilizer jacks

## EXTREME PACKAGE OPTIONS

- 5" extra ground clearance
- 6-sided flex-foil insulation
- 15" off-road mud tires
- Double entrance step
- Enclosed underbelly
- Fender flair
- Front black diamond plate

## WIDEBODY OPTIONS

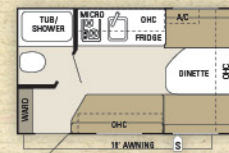
- 26" LED TV and CD/DVD player with MP3/iPod in put jack
- Décor Upgrade Package: Decorative dinette light (25BHS), jack-knife sofa, kitchen backsplash and valances with lambrequin legs
- Oven
- Spare tire with carrier and 50th Anniversary cover



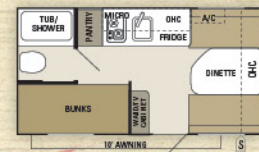
## SCAN

for a complete list of standards and options, OR VISIT [starcraftcamping.com](http://starcraftcamping.com)

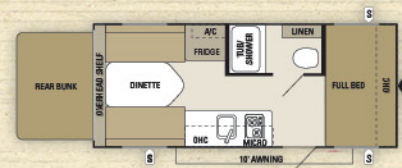
# Floorplans



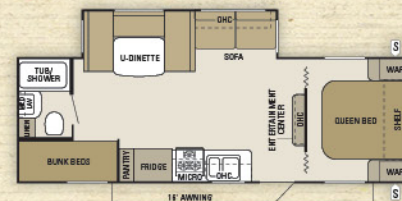
AR-ONE 14RB



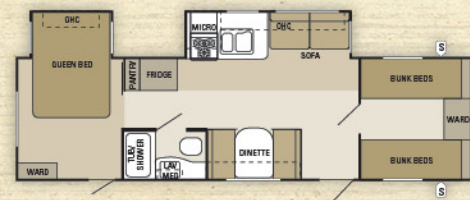
AR-ONE 16BH



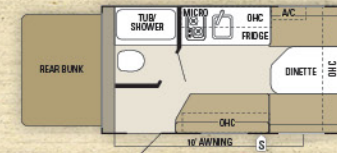
AR-ONE 18FB



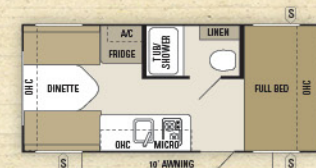
AR-ONE WideBody 25BHS



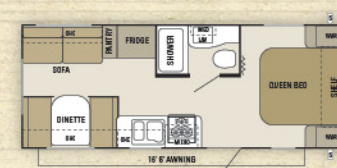
AR-ONE WideBody 28FBS



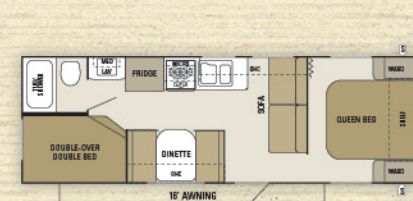
AR-ONE 15RB



AR-ONE 17RD



AR-ONE WideBody 21FB



AR-ONE WideBody 26BH

- OUTSIDE STORAGE
- TRAILER HITCH
- BATHROOM SINK
- MICROWAVE
- OVERHEAD CABINETS
- REFRIGERATOR
- WARDROBE

# Specifications

Floorplan	Exterior Length	Exterior Height	Interior Height	Unloaded Vehicle Weight (lbs.)	Dry Hitch Weight (lbs.)	Gross Vehicle Weight Rating (lbs.)	Cargo Carrying Capacity (lbs.)	Fresh Water Capacity (gal.) (includes water heater)	Gray Water Capacity (gal.)	Black Waste Water Capacity (gal.)
14RB	16' 6"	102"	73"	2,380	280	3,200	820	32	15	9
15RB	17' 6"	103"	73"	2,550	220	3,200	650	32	15	9
16BH	17' 10"	103"	73"	2,560	335	3,200	640	32	15	9
17RD	20' 6"	103"	73"	2,900	355	3,500	600	26	15	9
18FB	21' 6"	103"	73"	2,990	370	3,750	760	26	15	9
21FB	25' 7"	126"	81"	3,905	495	6,000	2,095	48	32.5	32.5
25BHS	29' 8"	132"	81"	5,280	665	7,500	2,220	48	32.5	32.5
26BH	29' 4"	126"	81"	4,300	495	6,500	2,200	48	32.5	32.5
28FBS	TBD	132"	81"	TBD	TBD	TBD	TBD	48	32.5	32.5

**UNLOADED VEHICLE WEIGHT (UWV):** Sometimes referred to as "Dry Weight," UWV means the typical weight of this trailer as built at the factory. The UWV, as used in product literature and other promotional materials, does not include cargo, fresh water, propane, options or dealer-installed accessories. The weights of certain options and/or option packages are not included in the UWV listed above. **GROSS VEHICLE WEIGHT RATING (GVWR):** GVWR means the maximum permissible weight of the trailer, including the UWV plus passengers, personal items, all cargo, fluids, options, and dealer-installed accessories. The GVWR is equal to or greater than the sum of the UWV and the CC. **CARGO CARRYING CAPACITY (CCC):** CCC means the maximum weight of all passengers, personal items, food, fresh water, propane, tools, other cargo, and dealer-installed accessories that can be carried by the trailer. CCC is equal to or less than GVWR minus UWV. The addition of options will decrease the CCC. **HITCH WEIGHT (HW):** The hitch weight, as used in product literature and other promotional materials, does not include cargo, fresh water, propane, options or dealer-installed accessories. The addition of these types of items will either add to or subtract from the stated hitch weight. It is important for your safety and enjoyment that your tow vehicle be adequately sized and equipped to tow and handle the GVWR of the RV you select. Review weights and ratings of your tow vehicle and consult a competent advisor for questions or advice. Whether you are new to RVing or a veteran, get a feel for the performance of your tow vehicle and the RV together before heading out on the roadways. When you tow an RV, you must drive differently than you do when driving a single vehicle. Practice hooking up, driving, backing up and braking in a safe environment or seek out professional instruction. Starcraft trailers have a weight label on each RV which lists weight information for that vehicle. See specification chart on the right.



CELEBRATING

# 50 Years of Innovation



Starcraft is one of the most dependable names in the camping industry, thanks to 50 years of unwavering innovation.

**Our family-owned company remains devoted to building quality campers purely built for camping — all at an affordable price.**

With a versatile lineup, Starcraft delivers everything you need to have a great time in the great outdoors.

## DURABLE CONSTRUCTION

AR-ONE features durable construction, including wooden wall studs on 16" centers, .024" aluminum exterior siding, crowned roof trusses, 3/8" roof decking, a one-piece seamless rubber roof, 5/8" main floor decking, Poly Flex one-piece underbelly covering and hardwood cabinetry stiles with screwed construction.



### eco advantage™

The Starcraft EcoAdvantage is our company's commitment to protecting the environment. Scan this QR code with your smartphone to watch a video about our efforts and the impact we're making on our planet.



For a copy of the industry-leading limited warranty with full terms and conditions, ask your local Starcraft dealer.



*The Value of Your Local Starcraft Dealer*

Establishing a solid relationship with your local Starcraft dealer is a key component in the enjoyment of your new Starcraft. By purchasing from a local dealer, you will have a convenient location for sales, parts and service support.



Over the last 50 years, we've created a solid reputation building dependable campers at affordable prices, using only the highest-quality materials.

FOLLOW US ON



© Starcraft RV • 536 Michigan St., Topeka, IN 46571   
www.starcraftcamping.com

See dealer for further information and prices. All information in this brochure is the latest available at the time of publication approval. Starcraft reserves the right to make changes and to discontinue models without notice or obligation. Photos in this brochure may show optional equipment and props for photography purposes. RV's built for sale in Canada may differ to conform to Canadian codes.

[www.starcraftcamping.com](http://www.starcraftcamping.com)

VISIT OUR WEBSITE FOR MORE INFORMATION OR TO FIND A DEALER NEAR YOU.